



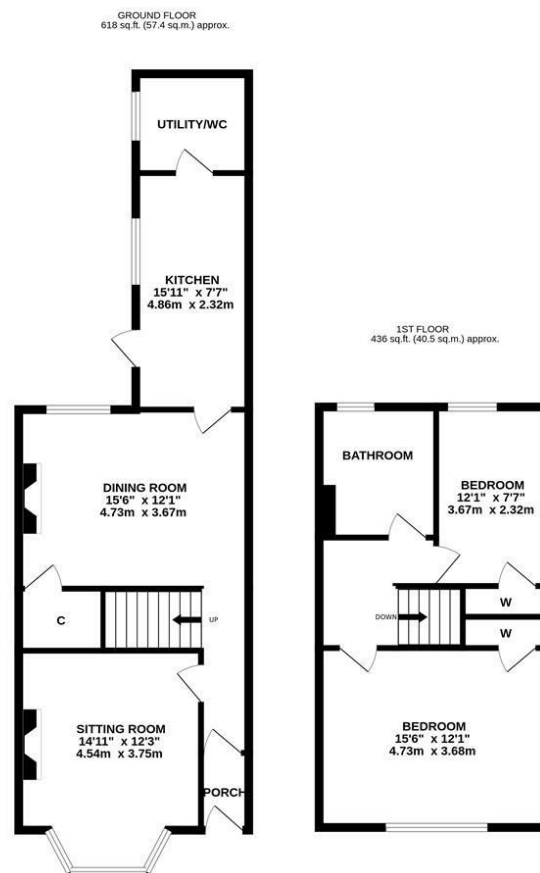


**SUPER STYLISH, MID-TERRACE PERIOD HOME WITH A GENEROUS REAR YARD!**  
Situating close to Newcastle City Centre, a fine example of a two bedroom mid-terrace, ideally located on Biddlestone Road, Heaton. Biddlestone Road, situated within striking distance from Chillingham Road with its cafes, restaurants and transport links into Newcastle city centre and beyond. The delightful Heaton Park is also a short walk as are the shops and amenities on Heaton Road.

The accommodation briefly comprises: entrance porch through to hallway with stripped wood flooring and stairs to first floor; sitting room with walk in bay, stripped wood flooring and feature fireplace; dining room, again with stripped wood flooring together with under-stairs storage feature wood burning stove; kitchen with a range of fitted units, work surfaces, some integrated appliances, Belfast sink unit and side door access to the yard; utility/WC. The first floor landing gives access to; two bedrooms, bedroom one measuring the full-width of the property and both bedrooms with fitted wardrobe storage; bathroom complete with feature panelling and three piece suite including a free standing roll top bath. Externally, a front town garden and a delightful enclosed rear yard, laid to decking with wall boundaries and gated access to the rear service lane.

Super Stylish Mid-Terrace | 1,054 Sq ft (97.9m2) | Two Bedrooms | Sitting Room | Dining Room | Kitchen | Utility/WC | Bathroom with Three Piece Suite | Front Town Garden & Enclosed rear Yard | Great Location | Freehold | Council Tax Band C | EPC: C

EPC - C



Whilst every attempt has been made to ensure the accuracy of the floorplan contained here, measurements of doors, windows, rooms and any other items are approximate and no responsibility is taken for any error, omission or mis-statement. This plan is for illustrative purposes only and should be used as such by any prospective purchaser. The services, systems and appliances shown have not been tested and no guarantee as to their operability or efficiency can be given.  
Made with Metropix ©2025



**Offers Over £275,000**

**IMPORTANT NOTE:** These particulars and the descriptions and measurements herein do not constitute representation and whilst every effort has been made to ensure accuracy, this cannot be guaranteed.

